

TZ Series

Unified Threat Management firewall

The Dell™ SonicWALL™ TZ Series is the most secure Unified Threat Management (UTM) firewall for small businesses, retail deployments, remote sites, branch offices and distributed enterprises. Unlike consumer-grade products, the TZ Series delivers the most effective anti-malware, intrusion prevention, content/URL filtering and application control capabilities along with the broadest most secure mobile platform support for laptops, smartphones and tablets. It provides full deep packet inspection (DPI) at very high performance levels, eliminating the network bottleneck that other products introduce, and enabling organizations to realize increased productivity gains. The TZ Series is the most secure, sophisticated and widely-deployed security platform on the market today.

Additionally, the Dell SonicWALL Application Intelligence and Control capabilities in the TZ 215 ensures that bandwidth is available for business-critical applications while throttling or blocking unproductive applications. The TZ 215 also offers advanced application traffic analytics and reporting for deep insight into bandwidth utilization and security threats.

The TZ Series includes additional advanced networking features such as IPSec and SSL VPN, multiple ISP failover, load balancing, optional integrated 802.11n wireless and network segmentation, and also enables PCI compliance. The TZ Series is the only available UTM firewall that provides native VPN remote access client for

Apple® iOS, Google® Android™, Windows, Mac OS and Linux. This unique client also supports Clean VPN™, which decontaminates threats from VPN traffic. Providing the most secure support for mobile platforms, only Dell SonicWALL delivers full malware scanning of SSL encrypted traffic and application control for Android and iOS devices.

The new TZ Series is an elegant integration of multiple point products, combined into a single solution providing value while reducing complexity.

About Dell SonicWALL

Dell SonicWALL develops advanced intelligent network security and data protection solutions that adapt as organizations and threats evolve. Dell SonicWALL designs award-winning hardware, software and virtual-appliance solutions to detect and control applications and protect networks from intrusions and malware attacks. Dell SonicWALL is trusted by small businesses and large enterprises worldwide. Since 1991, it has shipped over two million appliances through its global network of channel partners to keep tens of millions of business computer users safe and in control of their data.

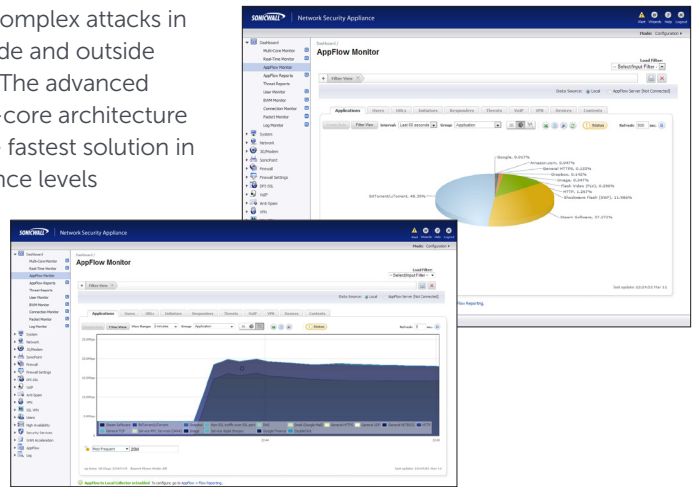


- Built on the proven security architecture of SonicOS, the TZ Series provides **highly effective anti-malware and intrusion prevention** to keep networks safe from sophisticated modern threats.
- **Highly secure SSL VPN remote access** is available natively for Apple iOS, Google Android, Windows, Mac OS and Linux based devices to unleash the potential of a mobile workforce.
- Dell SonicWALL content and URL filtering **blocks multiple categories of objectionable web content** to enable high workplace productivity and reduce legal liability.
- Easy to comprehend and quick to deploy, the graphical user interface in the TZ Series **eliminates the choice between ease-of-use and power**, driving down total cost of ownership.

Dell SonicWALL architecture

The Dell SonicWALL TZ 205 and TZ 215 feature dual-core Cavium CPUs, which process parallel data streams simultaneously, increasing overall protection and performance. Dual-core technology offers superior performance, scalability, and energy efficiency when compared with network security platforms based on general-purpose processors with separate security co-processors, or Application-Specific Integrated Circuits (ASIC), which can't

keep up with evolving complex attacks in real time from both inside and outside the network perimeter. The advanced high performance dual-core architecture makes the TZ Series the fastest solution in its class, with performance levels of up to 500 Mbps of stateful throughput, 110 Mbps deep packet inspection throughput and 130 Mbps 3DES or AES VPN throughput.



SonicOS software

Dell SonicWALL's patented* Reassembly-Free Deep Packet Inspection® (RFDPI) technology enables simultaneous, multi-threat and application scanning and analysis of unlimited files sizes and connections at extremely high speeds. This single code base is at the core of every Dell SonicWALL firewall, from the TZ 105 to the Dell SonicWALL SuperMassive E10800. The SuperMassive E10800 earned the coveted 'Recommend' rating in NSS Labs 2013 Next-Generation Firewall Security Value Map for the

second year in a row and Dell SonicWALL rates as one of the top vendors for security effectiveness. RFDPI is tightly integrated into the firewall platform, streamlining management of granular firewall policies, directly via the firewall interface or via the Dell SonicWALL Global Management System. Organizations can choose from an entire line of proven Dell SonicWALL firewalls with SonicOS, which massively scale to meet the needs of the highest performance networks.



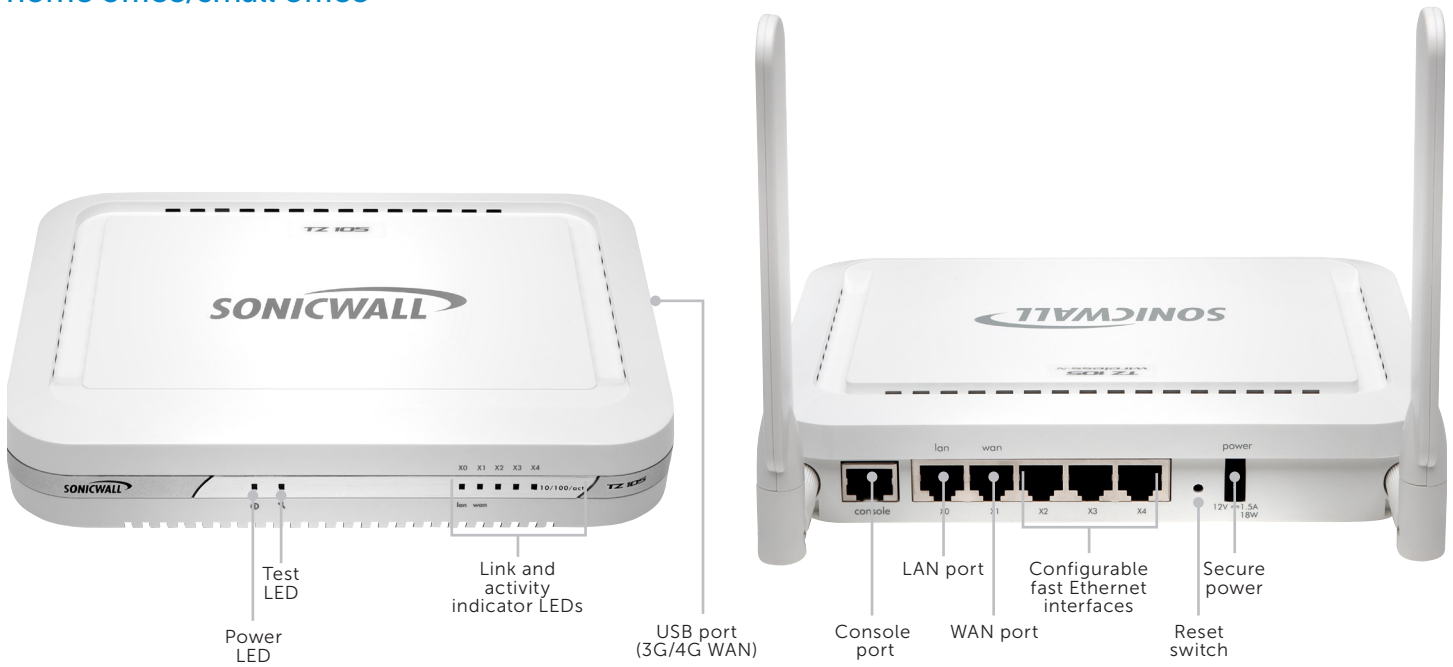
*U.S. Patents 7,310,815; 7,600,257; 7,738,380; 7,835,361; 7,991,723

	TZ 105	TZ 205	TZ 215
Firewall overview			
Stateful Packet Inspection Firewall throughput	200 Mbps	500 Mbps	500 Mbps
IPS throughput	60 Mbps	80 Mbps	110 Mbps
GAV throughput	40 Mbps	60 Mbps	70 Mbps
VPN throughput	75 Mbps	100 Mbps	110 Mbps
Full DPI (UTM)	25 Mbps	40 Mbps	60 Mbps
Maximum UTM/DPI connections	8,000	12,000	32,000
Unlimited file size protection	●	●	●
Hardware			
Dual core processor		●	●
Gigabit ethernet		●	●
802.11n support	●	●	●
Dual band 802.11 a/b/g/n support		●	●
Security services			
Intrusion protection*	●	●	●
Gateway Anti-Virus, Anti-Spyware and Cloud AV*	●	●	●
Content and URL Filtering (CFS)*	●	●	●
Enforced Client Anti-Virus and Anti-Spyware*	●	●	●
Application Intelligence and Control*			●

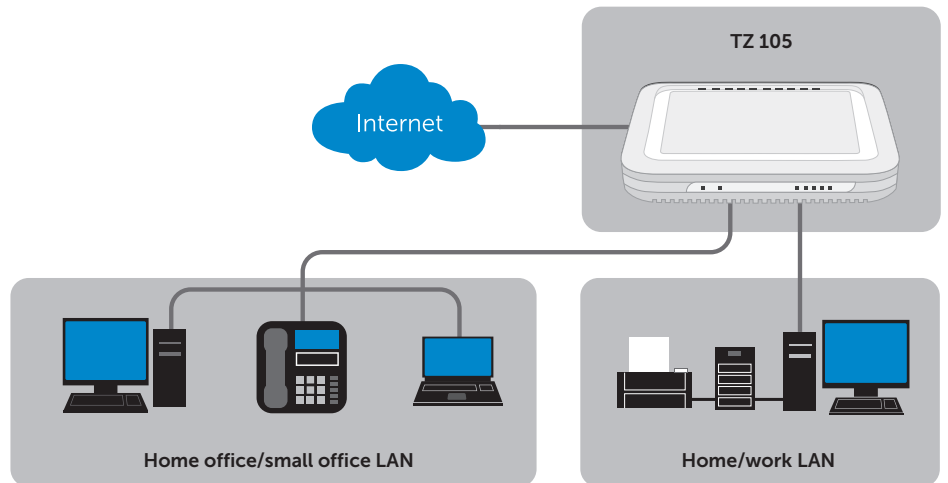
*Available with subscription service

Dell SonicWALL TZ 105

home office/small office



The new Dell SonicWALL TZ 105 is the most secure Unified Threat Management (UTM) firewall available for small offices, home offices and small retail deployments. Unlike consumer-grade products, the TZ 105 delivers the proven, most effective intrusion prevention, anti-malware and content/URL filtering, along with the broad mobile platform support for laptops, smartphones and tablets. It provides full deep packet inspection (DPI) at very high performance levels, eliminating the network bottleneck that other products introduce, and enabling organizations to realize increased productivity gains without the increased cost.



Hardware description

TZ 105 TotalSecure 1-year
 TZ 105 Wireless-N TotalSecure 1-year

SKU

01-SSC-4906
 01-SSC-4908

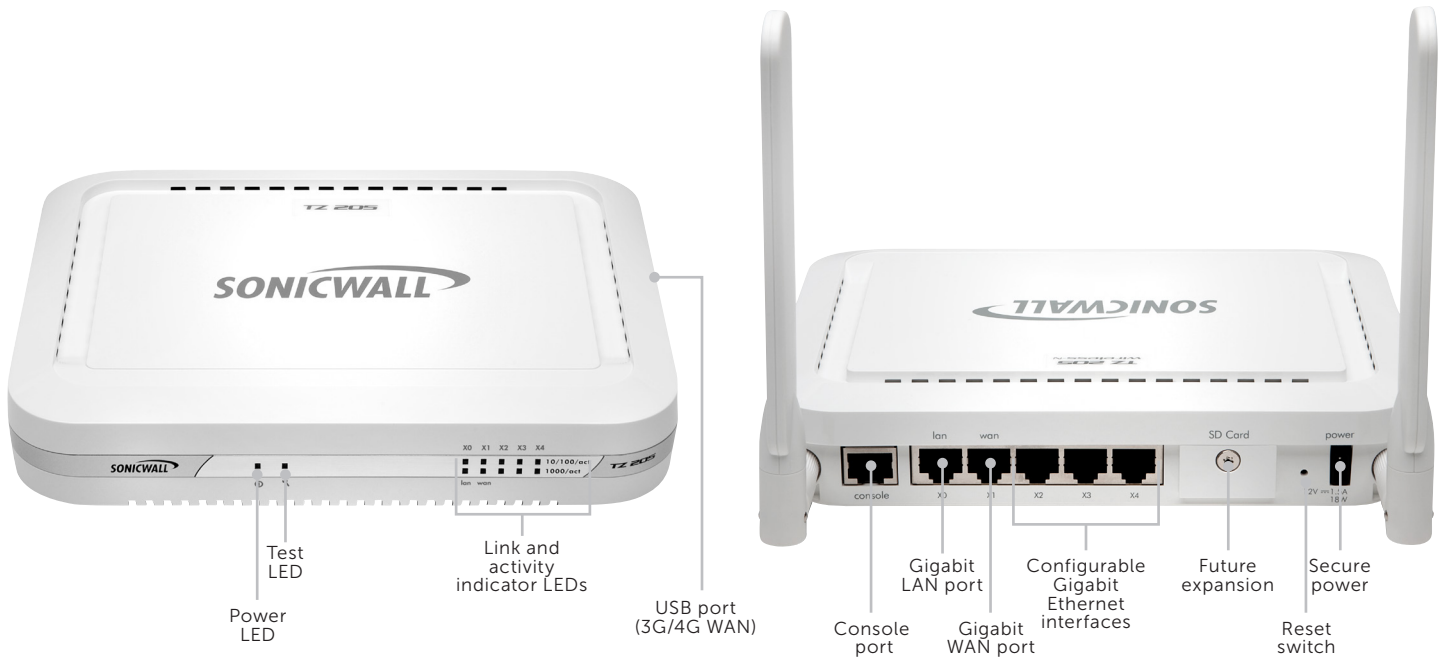
Service description

Comprehensive Gateway Security Suite 1-year
 Gateway Anti-Virus, Intrusion Prevention and Application Control 1-year
 Content/URL Filtering 1-year
 Comprehensive Anti-Spam Service 1-year
 8x5 Support 1-year
 24x7 Support 1-year

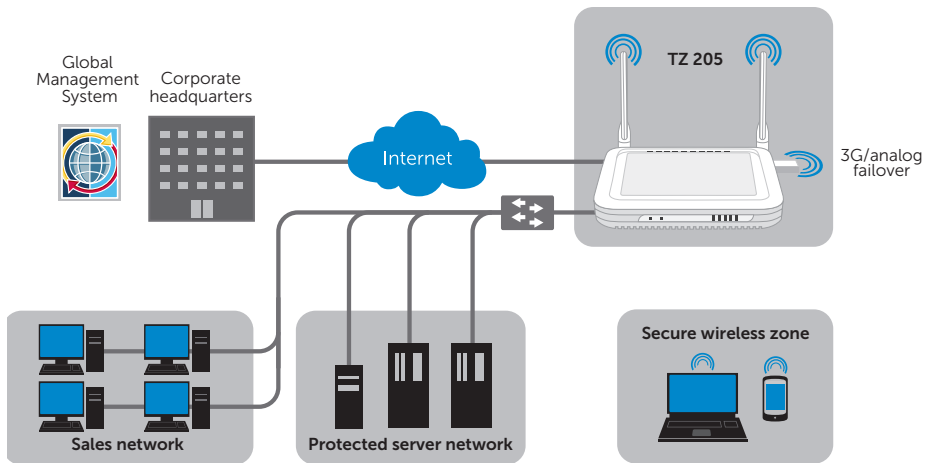
SKU

01-SSC-4877
 01-SSC-4844
 01-SSC-4850
 01-SSC-4871
 01-SSC-4856
 01-SSC-4862

Dell SonicWALL TZ 205
small office/retail



Small businesses, retail deployments, government organizations, remote sites and branch offices can benefit from the powerful security and business-class performance of the new Dell SonicWALL TZ 205. Unlike consumer grade products, this powerful Unified Threat Management (UTM) firewall combines the most effective intrusion prevention, anti-malware and content/URL filtering with the broadest, most secure mobile platform support for laptops, smartphones and tablets. By providing full deep packet inspection (DPI) at very high performance levels, it eliminates the tradeoff between comprehensive security and performance.



Hardware description

- TZ 205
- TZ 205 Wireless-N
- TZ 205 TotalSecure 1-year
- TZ 205 Wireless-N TotalSecure 1-year

SKU

- 01-SSC-6945
- 01-SSC-6947
- 01-SSC-4890
- 01-SSC-4892

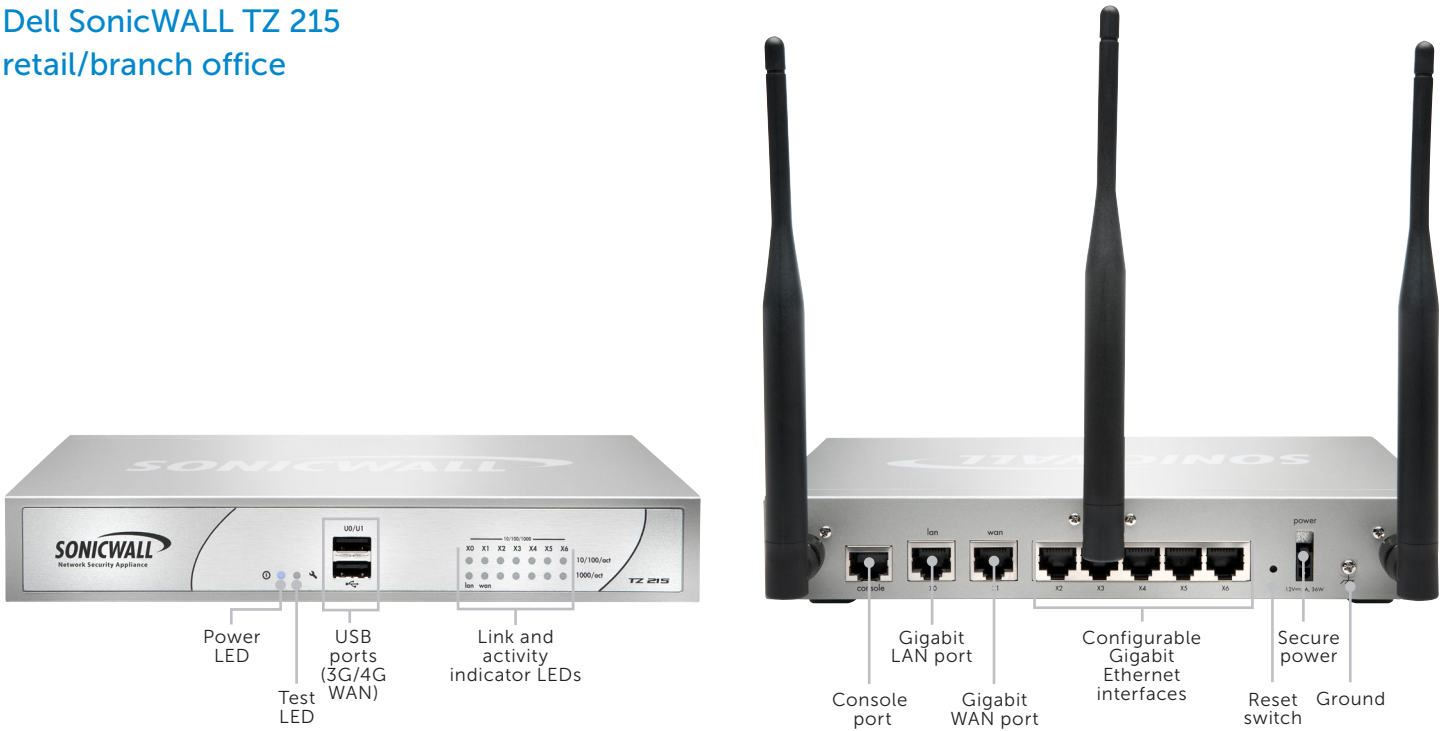
Service description

- Comprehensive Gateway Security Suite 1-year
- Gateway Anti-Virus, Intrusion Prevention and Application Control 1-year
- Content/URL Filtering 1-year
- Comprehensive Anti-Spam Service 1-year
- 8x5 support 1-year
- 24x7 support 1-year

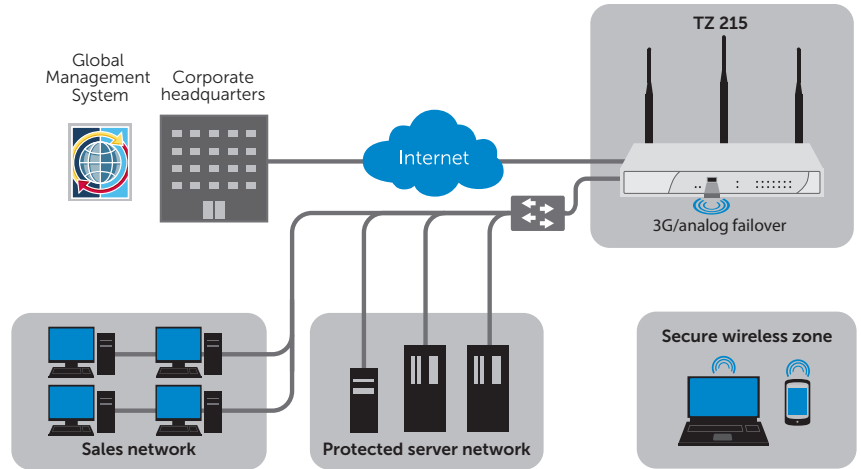
SKU

- 01-SSC-4838
- 01-SSC-4799
- 01-SSC-4805
- 01-SSC-4832
- 01-SSC-4811
- 01-SSC-4817

Dell SonicWALL TZ 215
retail/branch office



The new Dell SonicWALL TZ 215 is the most secure, highest performance Unified Threat Management (UTM) firewall available for small businesses and branch offices. Designed for small businesses, distributed enterprises, branch offices and retail deployments, the TZ 215 integrates anti-malware, intrusion prevention, application control and URL filtering, driving down cost and complexity. It provides a dual-core architecture delivering full deep packet inspection (DPI) without diminishing network performance, thus eliminating bottlenecks that other products introduce, enabling businesses to realize increased productivity gains. The TZ 215 also provides application control to ensure bandwidth for critical applications, while throttling non-productive ones. Advanced networking features include multiple ISP failover and load balancing, optional dual-band secure wireless, IPSec VPN support, network segmentation and PCI compliance capabilities.



Hardware description

- TZ 215
- TZ 215 Wireless-N
- TZ 215 TotalSecure 1-year
- TZ 215 Wireless-N TotalSecure 1-year

SKU

- 01-SSC-4976
- 01-SSC-4977
- 01-SSC-4982
- 01-SSC-4984

Service description

- Comprehensive Gateway Security Suite 1-year
- Gateway Anti-Virus, Intrusion Prevention, and Application Intelligence, Control and Visualization 1-year
- Content/URL Filtering 1-year
- Comprehensive Anti-Spam Service 1-year
- 8x5 support 1-year
- 24x7 support 1-year

SKU

- 01-SSC-4793
- 01-SSC-4757
- 01-SSC-4763
- 01-SSC-4787
- 01-SSC-4769
- 01-SSC-4775

Features

Intrusion prevention

Feature	Description
Signature-based scanning	Tightly integrated, signature-based intrusion prevention scans packet payloads for vulnerabilities and exploits that target critical internal systems.
Automatic signature updates	Dell SonicWALL's Research Team continuously updates and deploys an extensive list of IPS signatures that take immediate effect and do not require reboots or any other interruption in service.
Outbound threat prevention	The ability to inspect both inbound and outbound traffic ensures that the network will not unwittingly be used in Distributed Denial of Service attacks and will prevent any Command and Control Botnet communication.
Intra-zone IPS protection	Intrusion prevention can be deployed between internal security zones to protect sensitive servers and to prevent internal attacks.

VPN

IPSec VPN for site-to-site connectivity	High-performance IPSec VPN allows the firewall to connect remote branch offices to a central location.
SSL VPN or IPSec client remote access	Utilize clientless SSL VPN technology or an easy-to-manage IPSec client for easy access to email, files, computers, intranet sites and applications from a variety of platforms.
Redundant VPN gateway	When using multiple WANs, a primary and secondary VPN can be configured to allow seamless automatic failover and failback of all VPN sessions.
Route-based VPN	The ability to perform dynamic routing over VPN links ensures continuous uptime in the event of a temporary VPN tunnel failure by seamlessly re-routing traffic between endpoints through alternate routes.
Clean VPN	Dell SonicWALL Clean VPN™ both secures the integrity of VPN access and decontaminates malicious threats before they can enter the corporate network.

Gateway threat prevention

Gateway anti-malware	Dell SonicWALL's patented RFDPI engine scans all ports and protocols for viruses without file size or stream length limitation. SonicLabs Researchers constantly provide updated threat protection, providing faster response times and threat prevention.
Reassembly-Free Deep Packet (RFDPI)	Reassembly-Free Deep Packet Inspection keeps track of malware regardless of the order or inspection timing with which the packets arrive. This allows for extremely low latency while eliminating file and stream size limitations. This provides greater performance and security than outdated proxy designs which reassemble contents using sockets bolted to traditional anti-virus programs and are plagued with inefficiencies and the overhead of memory thrashing leading to high latency, low performance and size limitations.
Cloud anti-virus	Using the built-in RFDPI engine, Dell SonicWALL can leverage the power of the cloud to provide the most comprehensive set of anti-malware signatures available, while minimizing latency or delay. The Dell SonicWALL Cloud Anti-Virus Service provides millions of additional malware signatures for inspection of executable files using the most up-to-date information available.
Bi-directional Inspection	RFDPI can be performed on both inbound and outbound connections to provide protection in all network traffic directions.
24x7 signature updates	SonicLabs Research Team team creates and updates signature databases that are propagated automatically to the firewalls in the field, with those signatures taking immediate effect without any reboot or service interruption required.

Firewall and networking

Stateful packet inspection	All network traffic is inspected, analyzed and brought into compliance with firewall access policies.
DOS attack protection	SYN Flood protection provides defense against DOS attacks using both layer 3 SYN proxy and layer 2 SYN blacklisting technologies.
Flexible deployment	Can be deployed in traditional NAT and Layer 2 Bridge modes.
Policy-based routing	Create routes based on protocol to direct traffic to a preferred WAN connection with the ability to fail back to a secondary WAN in the event of an outage.
High availability	Supports Active/Passive failover to ensure increased reliability by protecting against hardware or software faults.
WAN load balancing	Load balance up to four WAN interfaces using Round Robin, Spillover or Percentage based methods.
WAN acceleration	WAN Acceleration decreases latency and increases transfer speeds between remote sites for even higher network efficiency gains.

Features

VoIP	
Feature	Description
Advanced QoS	Guarantee critical communications with 802.1p and DSCP tagging and remapping of VoIP traffic on the network.
DPI of VoIP traffic	Predefined signatures detect and block VoIP specific threats.
H.323 gatekeeper and SIP proxy support	Block spam calls by requiring that all incoming calls are authorized and authenticated by H.323 gatekeeper or SIP proxy.
Management and monitoring	
Web GUI	An intuitive web-based interface allows quick and convenient configuration in addition to management through Dell SonicWALL Global Management System (GMS®), or the CLI.
SNMP	SNMP provides the ability to protectively monitor and respond to threats and alerts.
Netflow/IPFIX	Export an extended set of data through IPFIX or NetFlow protocols for granular insight into application traffic, bandwidth utilization and security threats in addition to powerful troubleshooting and forensics capabilities. Compatible with Dell SonicWALL Scrutinizer and third-party monitoring and reporting applications. (TZ 215 only)
Centralized policy management	With Dell SonicWALL GMS, monitor, configure and report on multiple Dell SonicWALL appliances from a single intuitive interface and customize your security environment to suit your individual policies.
Application intelligence and control	
Application control	Identify and control applications or individual components of an application based on RFDPI technology instead of relying on well-known ports and protocols.
Application bandwidth management	Allocate bandwidth to critical applications while throttling unproductive application traffic for an efficient and productive network.
Custom application identification	Create and configure custom application identification based on traffic parameters or on patterns unique to an application in its network communications.
Application traffic analytics	Provides organizations with granular insight into application traffic, bandwidth utilization and security in addition to powerful troubleshooting and forensics capabilities. (TZ 215 only)
Application signature database	A continuously expanding database of over 3,500 application signatures ensures that administrators are able to control the usage of all the latest applications on their network at a category or individual level.
User activity tracking	User identification is seamlessly integrated with Microsoft® Active Directory and other authentication systems enabling tracking and reporting of individual user identification.
GeoIP country traffic identification	Identify and control network traffic going to or coming from specific countries. (TZ 215 only)
Firewall and networking	
Firewall <ul style="list-style-type: none"> • Reassembly-Free Deep Packet Inspection • Stateful packet inspection • DOS attack protection • TCP reassembly • Stealth mode 	<ul style="list-style-type: none"> • Hyperlinked log messages • Unified CFS and app control with bandwidth throttling
Application control <ul style="list-style-type: none"> • Application control • Application component blocking • Application bandwidth management • Custom application signature creation • AppFlow visualization • Data leakage prevention • IPFIX with extensions reporting • User activity tracking • GeoIP country traffic identification • Comprehensive application signature database 	Anti-malware <ul style="list-style-type: none"> • Stream-based malware scanning • Gateway anti-virus • Gateway anti-spyware • Cloud Anti-Virus Service
Intrusion prevention <ul style="list-style-type: none"> • Signature-based scanning • Automatic signature updates • Outbound threat prevention • IPS exclusion list 	VoIP <ul style="list-style-type: none"> • Advanced QoS • Bandwidth management • DPI of VoIP traffic • Full Interoperability • H.323 gatekeeper and SIP proxy support
	Networking <ul style="list-style-type: none"> • Dynamic routing • Policy-based routing • Advanced NAT • DHCP server • Bandwidth management • Link aggregation • Port redundancy • High availability
	<ul style="list-style-type: none"> • IPv6 supported • Load balancing
	Management and monitoring <ul style="list-style-type: none"> • Web GUI • Command line interface • SNMP • Analyzer reporting • Scrutinizer reporting • GMS policy management and reporting • Logging • Netflow/IPFix • App visualization • Centralized policy management • Single sign-on • Terminal service/Citrix support
	Security services <ul style="list-style-type: none"> • Intrusion Prevention Service • Gateway Anti-Malware Service • Content Filtering Service • Enforced Client Anti-Virus and Anti-Spyware Service – McAfee® • Application Intelligence, Control and Visualization Service

Specifications

Firewall	TZ 105 Series	TZ 205 Series	TZ 215 Series
SonicOS version	SonicOS 5.8.1 and later		
Stateful throughput ¹	200 Mbps	500 Mbps	500 Mbps
IPS throughput ²	60 Mbps	80 Mbps	110 Mbps
GAV throughput ²	40 Mbps	60 Mbps	70 Mbps
UTM throughput ²	25 Mbps	40 Mbps	60 Mbps
Maximum connections ³	8,000	12,000	48,000
Maximum UTM/DPI connections	8,000	12,000	32,000
New connections/sec	1,000	1,500	1,800
Nodes supported	Unrestricted		
Denial of service attack protection	22 classes of DoS, DDoS and scanning attacks		
SonicPoints supported	1	2	16
VPN			
3DES/AES throughput ⁴	75 Mbps	100 Mbps	130 Mbps
Site-to-site VPN tunnels	5	10	20
Bundled GVC licenses (maximum)	0 (5)	2 (10)	2 (25)
Bundled SSL VPN licenses (maximum)	1 (5)	1 (10)	2 (10)
Encryption/Authentication/DH Group	DES, 3DES, AES (128, 142, 256-bit), MD5, SHA-1, SHA-2/DH Group 1, 2, 5, 14		
Virtual assist bundled (maximum)	–	1 (30-day trial)	2 (30-day trial)
Key exchange	IKE, Manual Key, Certificates (X.509), L2TP over IPsec		
Certificate support	Verisign, Thawte, Cybertrust, RSA Keon, Entrust and Microsoft CA for Dell SonicWALL-to-Dell SonicWALL VPN, SCEP		
VPN features	Dead Peer Detection, DHCP Over VPN, IPsec NAT Traversal, Redundant VPN Gateway, Route-based VPN		
Global VPN client platforms supported	Microsoft® Windows XP, Vista 32/64-bit, Windows 7 32/64-bit		
SSL VPN platforms	Microsoft Windows XP/Vista 32/64-bit/Windows 7, Mac OSX 10.4+, Linux FC3+/Ubuntu 7+/OpenSUSE		
Mobile Connect platform supported	Apple® iOS 4.2 or higher, Google® Android™ 4.0 or higher		
Security services			
Deep Packet Inspection services	Gateway Anti-Virus, Anti-Spyware, Intrusion Prevention, Application Intelligence and Control (TZ 215 only)		
Content Filtering Service (CFS)	HTTP URL, HTTPS IP, keyword and content scanning, ActiveX, Java Applet, and cookie blocking bandwidth management on filtering categories, allow/forbid lists		
Enforced Client Anti-Virus and Anti-Spyware	McAfee®		
Comprehensive Anti-Spam Service ⁵	Supported		
Application Intelligence and Control	Application control		Application Traffic Visualization and Advanced Application Control
Networking			
IP address assignment	Static, (DHCP, PPPoE, L2TP and PPTP client), Internal DHCP server, DHCP relay		
NAT modes	1:1, 1:many, many:1, many:many, flexible NAT (overlapping IPs), PAT, transparent mode		
VLANs	5, PortShield	10, PortShield	20, PortShield
DHCP	Internal server, relay		
Routing	OSPF, RIP v1/v2, static routes, policy-based routing, multicast		
Authentication	XAUTH/RADIUS, Active Directory, SSO, LDAP, Novell, internal user database, Terminal Services, Citrix		
Local user database	150 users		
VoIP	Full H.323v1-5, SIP, gatekeeper support, outbound bandwidth management, VoIP over WLAN, deep inspection security, full interoperability with most VoIP gateway and communications devices		
System			
Zone security	Yes		
Schedules	Yes		
Object-based/group-based management	Yes		
DDNS	Dynamic DNS providers include: dyndns.org, yi.org, no-ip.com and changeip.com		
Management and monitoring	Local CLI, Web GUI (HTTP, HTTPS), SNMP v3; Global management with Dell SonicWALL GMS Analyzer, Scrutinizer, GMS, Local Log, Syslog, Solera Networks, NetFlow v5/v9 (TZ 215), iPFIX with Extensions (TZ 215), Real-time Visualization (TZ 215 only)		
Logging and reporting			
Hardware failover	–	Active/Passive	Active/Passive
Anti-spam	RBL support, Allowed/Blocked Lists, Optional Dell SonicWALL Comprehensive Anti-Spam Service ⁵		
Load balancing	Yes, Outgoing and Incoming		
Standards	TCP/IP, UDP, ICMP, HTTP, HTTPS, IPsec, ISAKMP/IKE, SNMP, DHCP, PPPoE, L2TP, PPTP, RADIUS, IEEE 802.3		
WAN acceleration support ⁷	Yes, with Dell SonicWALL WXA appliances		
Built-in wireless LAN			
Standards	802.11b/g/n	802.11a/b/g/n (3x3)	802.11a/b/g/n (3x3)
Wireless security standards	(WEP, WPA, WPA2, 802.11i, TKIP, PSK, 02.1x, EAP-PEAP, EAP-TTLS)		
Virtual Access Points (VAPs)	Up to 8		
Antennas	Double: detachable, external	Triple: 2 external detachable, 1 internal	Triple: detachable, external
Radio power–802.11b/802.11g/802.11n	18 dBm max/18 dBm @ 6Mbps, 15 dBm @ 54Mbps	15.5 dBm max/18 dBm max/17 dBm @ 6 Mbps, 13 dBm @ 54 Mbps	15.5 dBm max/18 dBm max/17 dBm @ 6 Mbps, 13 dBm @ 54 Mbps
Radio power–802.11a/802.11b/802.11g/802.11n	–	15.5 dBm max/18 dBm max/17 dBm @ 6 Mbps, 13 dBm @ 54 Mbps	15.5 dBm max/18 dBm max/17 dBm @ 6 Mbps, 13 dBm @ 54 Mbps
Radio power–802.11n (2.4GHz)/802.11n (5.0GHz)	19 dBm MCS 0, 12 dBm MCS 15	19 dBm MCS 0, 11 dBm MCS 15/17 dBm MCS 0, 12 dBm MCS 15	19 dBm MCS 0, 11 dBm MCS 15/17 dBm MCS 0, 12 dBm MCS 15
Radio receive sensitivity–802.11a/802.11b/802.11g	-90 dBm @ 11Mbps/-91 dBm @ 6 Mbps, -74 dBm @ 54 Mbps	-95 dBm MCS 0, -81 dBm MCS 15/-90 dBm @ 11Mbps/-91 dBm @ 6Mbps, -74 dBm @ 54 Mbps	-95 dBm MCS 0, -81 dBm MCS 15/-90 dBm @ 11Mbps/-91 dBm @ 6Mbps, -74 dBm @ 54 Mbps
Radio receive sensitivity–802.11n (2.4GHz)/802.11n (5.0GHz)	-89 dBm MCS 0, -70 dBm MCS 15	-89 dBm MCS 0, -70 dBm MCS 15/-95 dBm MCS 0, -76 dBm MCS 15	-89 dBm MCS 0, -70 dBm MCS 15/-95 dBm MCS 0, -76 dBm MCS 15
Hardware built-in wireless LAN			
Interfaces	(5) 10/100 fast ethernet, 1 USB, 1 console	(5) 10/100/1000 copper gigabit, 1 USB, 1 console	(7) 10/100/1000 copper gigabit, 2 USB, 1 console
Processor	Single-core	Dual-core	Dual-core
Flash memory/RAM	32 MB/256 MB	32 MB/256 MB	32 MB/512 MB
3G wireless/modem ⁸	Supported with approved adapters ⁵		
USB ports	1	1	2
Power input	100 to 240 VAC, 50-60 Hz, 1 A		
Max power consumption	5.2W/7.0W	6.4W/10.5W	9.0W/12.0W
Total heat dissipation	17.8 BTU/23.7 BTU	21.9 BTU/35.8 BTU	30.6 BTU/41.4 BTU
Certifications	VPNC, ICSA Firewall 4.1		
Certifications pending	EAL4+, FIPS 140-2 Level 2, IPv6 Phase 1, IPv6 Phase 2		
Form factor and dimensions	5.555 x 1.42 x 7.48 in (14.1 x 3.6 x 19 cm)	5.555 x 1.42 x 7.48 in (14.1 x 3.6 x 19 cm)	7.125 x 1.5 x 10.5 in (18.1 x 3.81 x 26.67 cm)
Weight	0.75 lbs/0.34 kg 0.84 lbs/0.38 kg	0.75 lbs/0.34 kg 0.84 lbs/0.38 kg	1.95 lbs/0.97 kg 2.15 lbs/0.97 kg
Major regulatory compliance	FCC Class A, CES Class A, CE, C-Tick, VCCI, Compliance MIC, NOM, UL, cUL, TUV/GS, CB, NOM, WEEE, RoHS		
Environment/humidity	40-105° F, 0-40° C / 5-95% non-condensing		
MTBF	28 years/15 years		

¹Testing Methodologies: Maximum performance based on RFC 2544 (for firewall). Actual performance may vary depending on network conditions and activated services. ²UTM/Gateway AV/Anti-Spyware/IPS throughput measured using industry standard Spirent WebAvalanche HTTP performance test and ixa test tools. Testing done with multiple flows through multiple port pairs. ³Actual maximum connection counts are lower when DPI services are enabled. ⁴VPN throughput measured using UDP traffic at 1280 byte packet size adhering to RFC 2544. ⁵3G card and modem are not included. See <http://www.sonicwall.com/us/products/cardsupport.html> for supported USB devices. ⁶The Comprehensive Anti-Spam Service supports an unrestricted number of users but is recommended for 250 users or less. ⁷With Dell SonicWALL WXA Series Appliances.



Security Monitoring Services from Dell SecureWorks are available for this appliance Series. For more information, visit www.dell.com/secureworks

